



Wide Support

Employee Matching Contribution Guidebook

(A Guide to Wide Support)

Comfortable future with a higher
standard of living.

Employee matching contribution allows participants in a corporate type Defined Contribution Pension Plan to make contributions in addition to contributions made by the employer (plan sponsor contributions).

This guidebook provides you with advantages and other points of the scheme, including how to get started.



1 How Employee Matching Contributions Work

What is an employee matching contribution?

An employee matching contribution allows participants in a corporate type Defined Contribution Pension Plan to make contributions (participant contributions) in addition to contributions made by the employer (plan sponsor contributions). Participant contributions may not exceed plan sponsor contribution amounts. In addition, the sum of participant and plan sponsor contributions may not exceed the legal contribution limit. Participant contributions are deducted from the participant's payroll and are paid along with plan sponsor contributions to purchase investment products.



Monthly Contributions



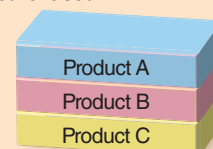
Contribution Date

Company pays the sum of plan sponsor and participant contributions

Contribution
(Sum of plan sponsor and participant contributions)

After the contribution date

Specified investment products are purchased



* Investment products are purchased with the sum of plan sponsor and participant contributions.

2 Merits of Employee Matching Contributions

Preferential tax treatment is applied to matching contributions.

Merit 1

[Contributions] 100% of participant contributions are subject to an income deduction.

Participant contributions will be subject to the deductions for Small Enterprise Mutual Aid, and deducted from salary income in the calculation of taxable income, reducing income tax and residential tax.



[Taxation merit related to taxable income and participant contributions]

Reduced tax amount = Total tax rate of income tax and residential tax × Annual participant contribution

Taxable income (annual)	Total tax rate of income tax and residential tax	Reduced tax amount (annual)
		Matching contribution Participant contribution amount (monthly)
1950k yen or less	15%	10k yen
More than 1950k yen - 3300k yen or less	20%	18k yen
More than 3300k yen - 6950k yen or less	30%	24k yen
More than 6950k yen - 9000k yen or less	33%	36k yen
More than 9000k yen - 18000k yen or less	43%	39k yen
More than 18000k yen - 40000k yen or less	50%	51k yen
More than 40000k yen	55%	60k yen
		66k yen

* The total rate of income tax and residential tax as of January, 2024. Special Income Tax for Reconstruction is not included.

* Taxable income = Salary income - Amount of employment income exemption - Other income exemptions

* Fractions less than 1,000 yen in the reduced tax amount table are rounded down.

Merit 2

[Investment] Investment gains are tax-free. Investment gains can be reinvested for growth.

Assets in a defined contribution pension are subject to special corporate tax and corporate residential tax (1.173% total); however, the tax is currently suspended.

Merit 3

[Benefit] Distributions receive preferential tax treatment.

Lump-sum payments are subject to the deduction for retirement income. Periodic payments (annuity) are subject to the deduction for public pensions.

3 Highlights of Employee Matching Contributions

Point 1

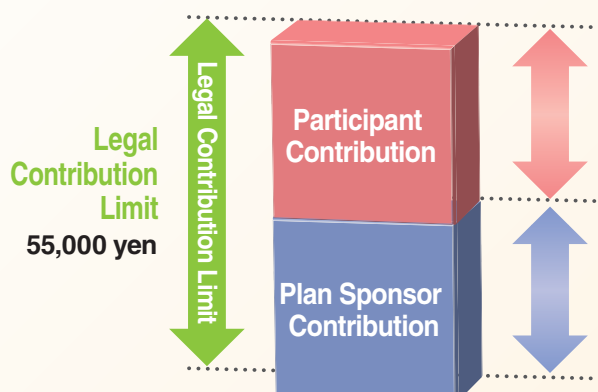
There is a limit on the participant contribution amount.

Participant contribution may not exceed plan sponsor contribution amounts. In addition, the sum of participant and plan sponsor contributions may not exceed the legal contribution limit.*
(Participant contributions can be made starting at 1,000 yen.)



* The legal contribution limit is 55,000 yen per month. If enrolled in other corporate pension plans, the limit is the amount obtained by deducting the amount equivalent to contribution amount in other pension plans from 55,000 yen per month.
("Other corporate pension plans" refers to Employees' Pension Fund, defined benefit pension plan, Coal Mining Pension Fund, etc.)

<With no other corporate pension plans>



Participant Contributions

Contributions are made by a participant. Participant contribution may not exceed plan sponsor contribution amounts. In addition, the sum of participant and plan sponsor contributions may not exceed the legal contribution limit.

Plan Sponsor Contributions

Contributions are made by a company.

Point 2

New applications to make participant contributions can be made at any time.

* Depending on the plan, the months in which new applications are accepted may be limited.

Point 3

Participant contributions are deducted from the monthly payroll.

* The date contributions are deducted from payroll varies by company.

Point 4

Specified investment products are purchased with the sum of plan sponsor and participant contributions.

Point 5

As a general rule, withdrawals of funds from the plan are not permitted.

4 Important Facts

1 Participant contributions may be adjusted automatically after an application is submitted.

Adjustments made to participant contributions

If a participant contribution, which you have applied to make, exceeds the limit, the amount will be automatically reduced (adjusted) to be within the limit. Please be aware that the amount you applied for and the actual amount contributed may differ. Participants can check the participant contribution amount actually applied by accessing "Participant Contribution (Adjustments) History" on the AnswerNet (online). For details, please refer to **P.8**.



Cases in which participant contributions are automatically reduced (adjusted) (no other corporate pension plans in place)

Plan sponsor contribution reduction		<ul style="list-style-type: none"> ● If the plan sponsor contribution is 30,000 yen, the participant contribution limit will be 25,000 yen. ● If the plan sponsor contribution is reduced from 30,000 yen to 20,000 yen, the participant contribution limit will be 20,000 yen. The participant contribution will be reduced (adjusted) from 25,000 yen to 20,000 yen, which is the limit.
Plan sponsor contribution increase		<ul style="list-style-type: none"> ● If the plan sponsor contribution is 27,500 yen, the participant contribution limit will be 27,500 yen. ● If the plan sponsor contribution increases from 27,500 yen to 30,000 yen, the participant contribution limit will be 25,000 yen. The participant contribution will be reduced (adjusted) from 27,500 yen to 25,000 yen, which is the limit.

* If the result of adjustment (reduced) amount is less than 1,000 yen, participant contribution will be 0 yen.

2 Participant contribution may be changed once a year.

Participant contribution amount may be changed once a year during the month prescribed in the plan document. Please refer to **P.6** for details on changing participant contributions.

3 Participant contributions may be suspended or resumed at any time.

Participant contributions may be suspended (temporarily stopping participant contributions) or resumed (resuming after suspending) at any time.

Please refer to **P.7** for details on how to suspend or resume participant contributions.

* Depending on the plan, the months in which applications for resume participant contribution are accepted may be limited.

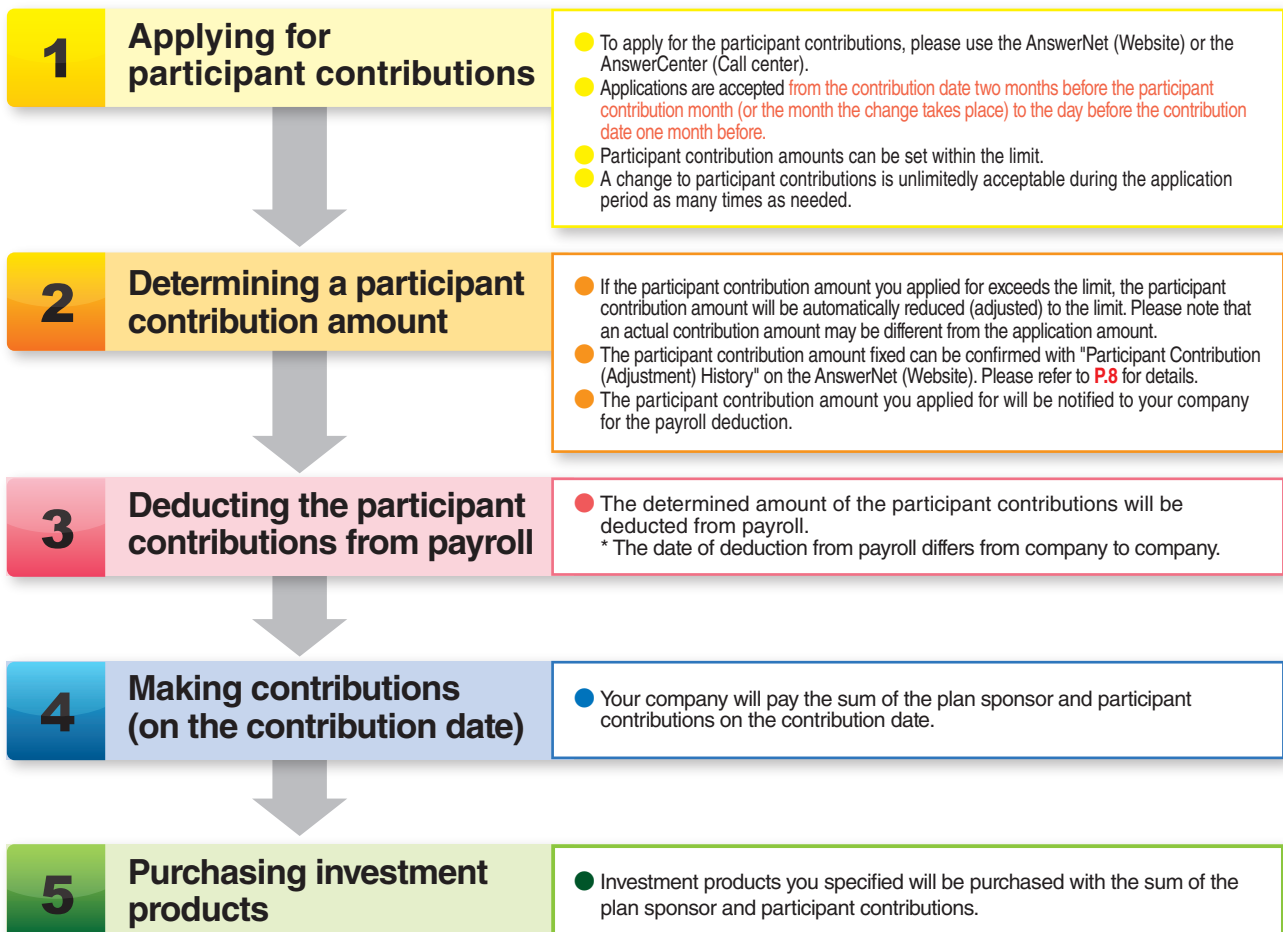
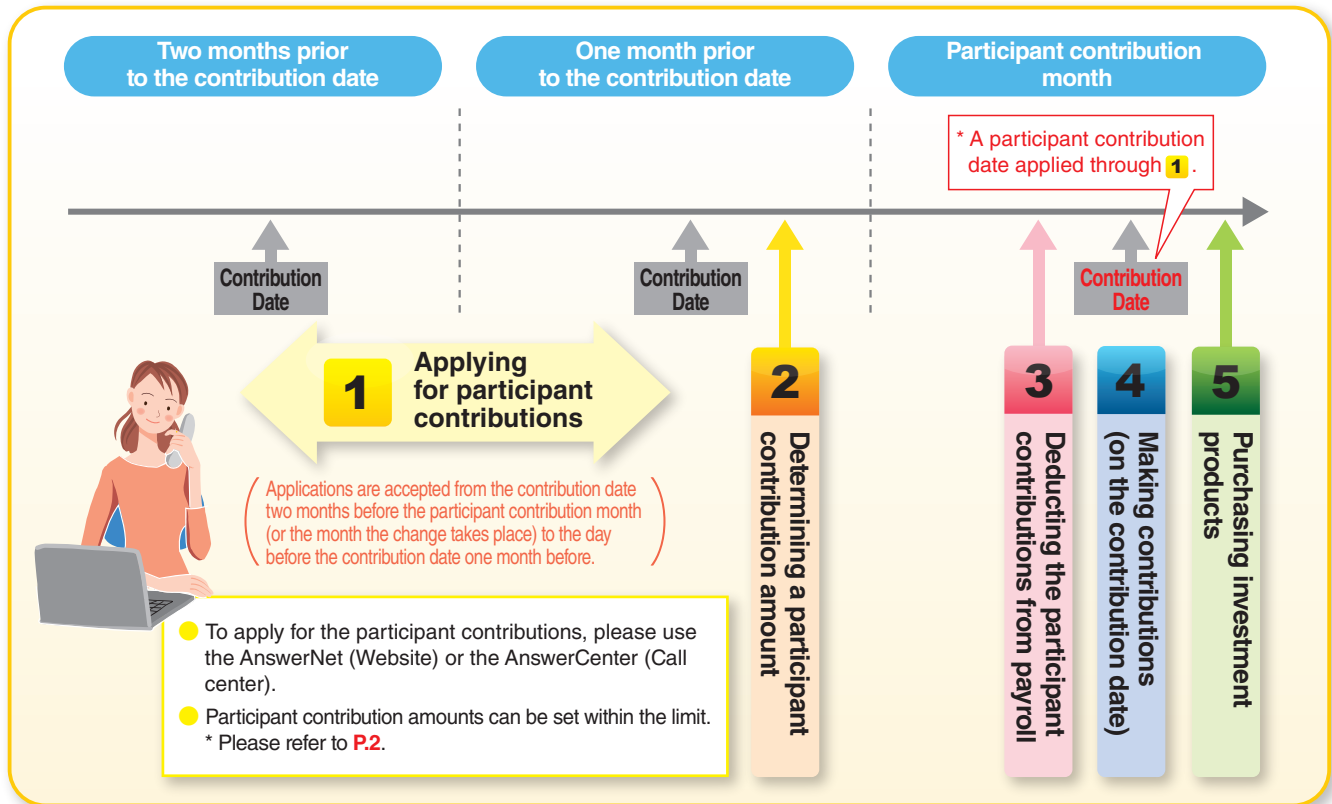
* Participant contribution suspension does not count as "a change once a year".

4 Participant contributions will be suspended when plan sponsor contributions are suspended.

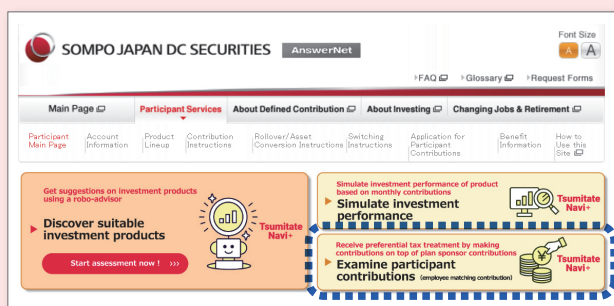
Participant contributions will be suspended when plan sponsor contributions are suspended due to a leave, etc. When plan sponsor contributions resume upon your return to work, you will need to apply to make participant contributions separately.

* In case the participant contribution amount was unable to be deducted from the monthly payroll, the participant contribution may be suspended.

5 Participant Contribution Application Flow

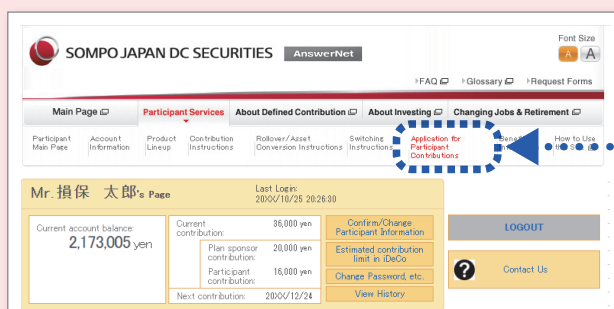


6 How to make applications for participant contributions



You can simulate the tax benefits of employee matching contribution from the "Participant Main Page" of the AnswerNet and then apply for participant contributions.

1 How to apply for participant contributions through the AnswerNet



You can open the "Application for Participant Contributions" webpage from here.

Click "Application for Participant Contributions" on the menu bar to access the webpage.

The screen will change to the "Application for Participant Contributions" screen.

Application for participant contributions for the first time

**The new applications make participant contributions can be made at any time.
(Some companies specify a certain month for new participant contribution applications.)**

A new application for participant contributions can be made within the "designated acceptance period" on the screen with 1,000 yen as the minimum and within the "Participant contribution limit".

To confirm the date when your next participant contribution will be made, please reference "Next contribution" on the screen.

1 Select the button "I wish to make or change participant contributions".

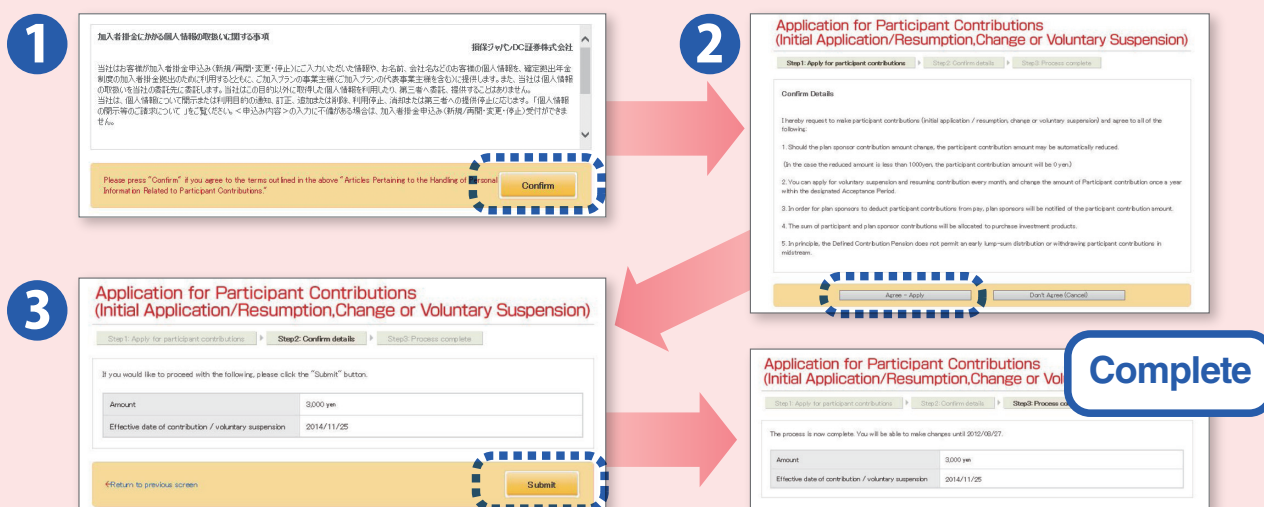
2 Enter the participant contribution amount you wish to make.

If you wish to cancel the amount you have specified, click "Cancel".

Note: "Participant contribution limit" is the amount calculated by deducting the fixed plan sponsor contribution amount from the contribution limit, with the amount not exceeding the plan sponsor contribution amount.

■ The confirmation screen for application details

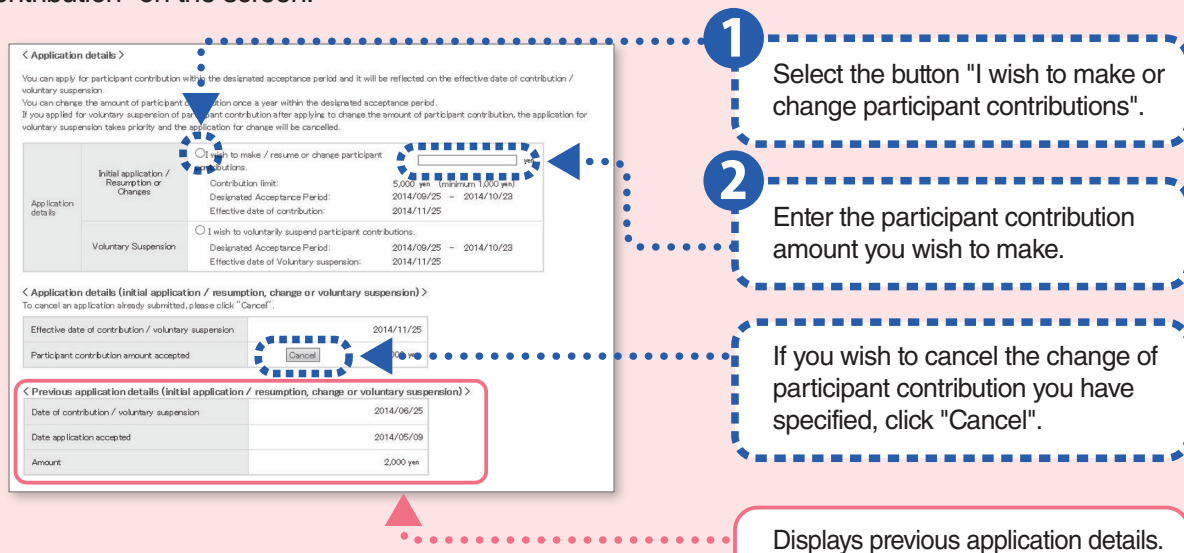
- 1 Click "Confirm" if you agree to the terms of "Articles Pertaining to the Handling of Personal Information Related to participant Contributions".
- 2 Click "Agree-Apply" if you agree to the terms of "Matters related to application for participant contribution (Initial application/Resumption, Change or Voluntary suspension)".
- 3 Move to specified application details screen. Click "Submit" after verifying the information you have provided, then the process is complete.
(You can use the same procedures to apply for changes, voluntary suspension and resuming participant contributions.)



■ Application for changing a participant contribution amount

**You can change the participant contribution amount once a year.
(The change may be made during the months prescribed in the plan documents.)**

Application for change of participant contributions can be made within the "designated acceptance period" on the screen with 1,000 yen as the minimum and within the "Participant contribution limit". To confirm the date when your next participant contribution will be made, please reference "Next contribution" on the screen.



6 How to make applications for participant contributions (continued)

Application for suspending participant contributions

You can apply for the suspension of the participant contributions at any time.

Application for voluntary suspension of participant contributions can be made within the "designated acceptance period" on the screen.

Effective date of suspension can be refer to "Effective date of Voluntary suspension" on the screen.

< Application details >

You can apply for participant contribution within the designated acceptance period and it will be reflected on the effective date of contribution / voluntary suspension.
You can change the amount of participant contribution once a year within the designated acceptance period.
If you applied for voluntary suspension of participant contribution after applying to change the amount of participant contribution, the application for voluntary suspension takes priority and the application for change will be cancelled.

Application details

Initial application / Resumption or Changes

Voluntary Suspension

Designated Acceptance Period: 2014/09/25 ~ 2014/10/23

Effective date of Voluntary suspension: 2014/11/25

Participant contribution amount accepted: 5,000 yen

< Application details (initial application / resumption, change or voluntary suspension) >

To cancel an application already submitted, please click "Cancel".

Effective date of contribution / voluntary suspension: 2014/11/25

Participant contribution amount accepted: 5,000 yen

< Previous application details (initial application / resumption, change or voluntary suspension) >

Date of contribution / voluntary suspension	2014/06/25
Date application accepted	2014/05/09
Amount	2,000 yen

1

Select the button "I wish to voluntarily suspend participant contributions".

If you wish to cancel the voluntary suspension you have specified, click "Cancel".

Displays previous application details.

Application for resuming participant contributions

Participant contributions may be resumed at any time.

(* Depending on the plan, the months in which application for resuming are accepted may be limited.)

Application for resuming participant contribution can be made within the "designated acceptance period" on the screen with 1,000 yen as the minimum and within the "Participant contribution limit". Contribution date which specified participant contribution amount is reflected can be referred to "Next contribution" on the screen.

< Application details >

You can apply for participant contribution within the designated acceptance period and it will be reflected on the effective date of contribution / voluntary suspension.
You can change the amount of participant contribution once a year within the designated acceptance period.
If you applied for voluntary suspension of participant contribution after applying to change the amount of participant contribution, the application for voluntary suspension takes priority and the application for change will be cancelled.

Application details

Initial application / Resumption or Changes

Voluntary Suspension

Designated Acceptance Period: 2014/09/25 ~ 2014/10/23

Effective date of contribution: 2014/11/25

Participant contribution amount accepted: 5,000 yen

< Application details (initial application / resumption, change or voluntary suspension) >

To cancel an application already submitted, please click "Cancel".

Effective date of contribution / voluntary suspension: 2014/11/25

Participant contribution amount accepted: 5,000 yen

< Previous application details (initial application / resumption, change or voluntary suspension) >

Date of contribution / voluntary suspension	2014/06/25
Date application accepted	2014/05/09
Amount	2,000 yen

1

Select the button "I wish to make or change participant contributions".

2

Enter the participant contribution amount you wish to make.

If you wish to cancel the resuming participant contribution you have specified, click "Cancel".

Displays previous application details.

2 Participant Contribution (Adjustments) History

SOMPO JAPAN DC SECURITIES AnswerNet

Main Page | Participant Services | About Defined Contribution | About Investing | Changing Jobs & Retirement | Request Forms

Participant Main Page | Account Information | Product Linkup | Contribution Instructions | Rollover/Asset Conversion Instructions | Switching Instructions | Participant Contribution | Bulk Information | Risk Site

Mr. 損保 太郎's Page Last Login: 2015/10/25 20:26:30

Current account balance: 2,173,005 yen

Current contribution: 38,000 yen

Plan sponsor contribution: 20,000 yen

Participant contribution: 18,000 yen

Next contribution: 2016/12/25

Configure Change Participant Information

Estimate Contribution Limit

View History

LOGOUT

Contact Us

1 You can open the "Participant Contribution (Adjustments) History" webpage screen from here.

Click "View History" on the menu screen.

2 Click "Participant Contribution (Adjustments) History".

View History

Transaction History

Access History

Participant Contribution (Adjustments) History

3 Specify the date range you wish to see and click "Submit" to view the search results.

Participant Contribution (Adjustments) History

Specify the dates of the transactions you would like to view, then click the "Submit" button.

Date Range

Period: 12 months including current month

Return to previous screen

Submit

Participant contribution (adjustments) history

On the screen of "Participant Contribution (Adjustments) History", you can confirm your actual contribution history, application details for participant contributions and participant contribution adjustment history.

In case the participant contribution is automatically adjusted, you can see the amount automatically adjusted and reason in the "Participant contribution adjusted" column.

Participant Contribution (Adjustments) History

Display date for: 12 months including current month

Contribution schedule			Application for participant contribution			Participant contribution adjusted	
Next contribution	Current monthly contribution (Yen)	Plan sponsor contribution (Yen)	Participant contribution (Yen)	Date accepted	Amount (Yen)	Adjusted amount (Yen)	Reason for adjustment
2015/03/25	38,000	19,000	19,000	-	-	0	

Contribution history			Application for participant contribution			Participant contribution adjusted	
Contribution date	Contribution amount (Yen)	Plan sponsor contribution (Yen)	Participant contribution (Yen)	Date accepted	Amount (Yen)	Adjusted amount (Yen)	Reason for adjustment
2015/02/25	38,000	19,000	19,000	-	-	-1,000	Exceeded plan sponsor contribution
2015/01/23	50,000	30,000	20,000	-	-	0	
2014/12/25	50,000	30,000	20,000	2014/11/16	20,000	0	
2014/11/25	55,000	30,000	25,000	-	-	-500	Exceeded contribution limit
2014/10/24	51,000	25,500	25,500	2014/09/15	25,500	0	
2014/09/25	Suspended	Suspended	Suspended	-	Suspended	0	Suspended (Plan sponsor contribution)
2014/08/25	51,000	25,500	25,500	-	-	0	

Example of Adjustment in Participant Contributions

1 Excess of Plan Sponsor Contributions:

If a participant contribution amount exceeds a plan sponsor contribution amount after reducing the plan sponsor contribution amount, then the participant contribution amount will be automatically reduced (adjusted).

2 Excess of Contribution Limit:

If the total amount of the plan sponsor contributions and participant contribution exceeds the legal contribution limit after increasing the plan sponsor contribution amount, then the participant contribution amount will be automatically reduced (adjusted).

* Please refer to P.3 for details of participant contribution adjustment.

<Other matters to be noted>

① Refund of participant contributions

Sompo Japan DC Securities Inc. will refund participant contributions through the plan sponsor.

In case of refund of participant's contribution, the investment products a participant is holding will be sold by calculating on a pro-rata basis the balance of each investment product.

A refund amount doesn't necessarily match the participant contribution amount since participant's individual assets which will be equivalent to the amount corresponding to the refund amount will be sold.

Participants may not be able to submit investment instructions a few days before and after selling products due to refund procedures for selling products.

② Change in employment under the same plan document

Participant contributions will be suspended automatically. If you wish to continuously make contributions at your new work place, please submit an application for participant contributions once again using the AnswerNet or the AnswerCenter.

Terms and Conditions for Sompo Japan DC Securities AnswerNet (for the defined contribution pension plan)

Wide Support [Revised on of February 1, 2024]

(Purpose of the rules)

Article 1 : These rules determine how participants under the corporate type defined contribution pension plan registered with Sompo Japan DC Securities Inc. (hereinafter, "the Company") can use an optional paid service (hereinafter, the "Wide Support") related to participant contributions in corporate type defined contribution pension plans, including those employing the Internet (the "Sompo Japan DC Securities AnswerNet"). Any matter not specifically stipulated in these rules is governed by the stipulation of the "Terms and Conditions for Sompo Japan DC Securities AnswerNet (for the defined contribution pension plan)", the "Defined Contribution Pension Plan Document" and the "Rules of the Use of Services for Participants of the Defined Contribution Pension Plan".

(Use of the Wide Support service)

Article 2 : The Wide Support service will be available to the participants under the corporate type defined contribution pension plan registered with the Company, to the extent that the contract between the Company and a plan sponsor is in full effect. Wide Support service is usable only when an ID and password entered match those registered with us.

(Service hours)

Article 3 : Service hours during which participants can use the services shall be specified by the Company. However, the Company may change service hours without any notice to participants.

2 The Company may cease or temporarily suspend some or all services without any notice due to technical difficulties with or maintenance with the system, etc.

(Wide Support services)

Article 4 : The services which participants can utilize shall be specified by the Company. The Company reserves the right to change the content of the services at its discretion without prior notification to participants.

(Application for participant contributions)

Article 5 : When participants submit applications related to participant contributions in a corporate type defined contribution pension plan (hereinafter, "participant contributions") using the Wide Support service, we shall consider that the applications from the participants have been submitted after the participants enter and confirm certain details specified by us and when we receive these details.

(Registration of application for participant contributions)

Article 6 : We will execute registration of the applications in the above Article as early as possible after the applications have been submitted in accordance with the provisions of our "Rules of the Use of Services for Participants of the Defined Contribution Pension Plan".

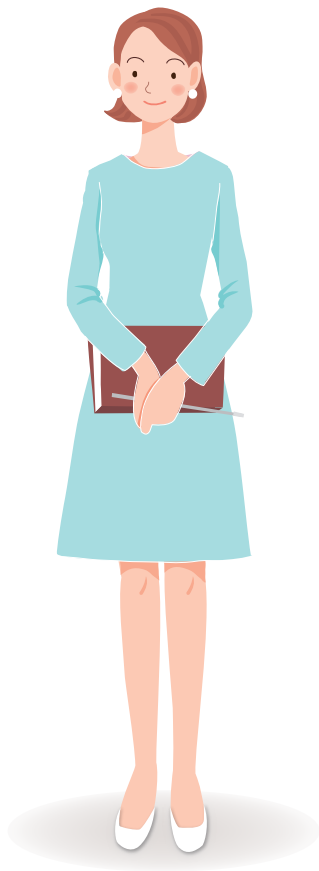
(Cancellation and change of the application)

Article 7 : Participants can cancel their applications described in Article 5 using the Wide Support service, but only during the hours specified by us.

2 When participants change their applications described in Article 5, they can do so using the Wide Support services only during the hours specified by us. This is to make changes to a prior submitted application and then submitting a new application with the changes.

(Mutatis Mutandis Application)

Article 8 : Any matter not specifically stipulated in the preceding articles is governed by the stipulation of the "Terms and Conditions for Sompo Japan DC Securities AnswerNet (for the defined contribution pension plan)".



Contact us



SOMPO JAPAN DC SECURITIES
AnswerCenter



